

# PROGRAM

**PEACE MEMORIAL  
AUDITORIUM**

THIS BUILDING IS DEDICATED TO THE MEMORY OF OUR EARLY SETTLERS WHOSE VISION IDEALS AND UNITY OF PURPOSE GAVE OUR CITY ITS ENDURING CHARACTER AND TO THOSE PATRIOTIC CITIZENS WHO SACRIFICED THEIR LIVES SO THAT AMERICAN DEMOCRACY MIGHT BE PRESERVED.

**MEMBERS OF THE COMMISSION-MANAGER  
GOVERNMENT**

ASHLEY H. MONAHAN	1951-1953
RICHARD D. ROGERS	1951-1953
LILLIAN K. BASCOM	1951-1955
HAROLD HOWE	1951-1955
Z. R. HOOK	1951-1955
N. D. HARWOOD	1953-1957
R. P. MARTIN	1953-1957

W. B. AVERY CITY MANAGER  
D. C. WESCHE ASST. CITY MANAGER

F. C. WOLFENBARGER & ASSOCIATES ARCHITECT

GREEN CONSTRUCTION COMPANY  
GENERAL CONTRACTORS

POWELL BROTHERS PLUMBING AND HEATING  
WILLIAMSON ELECTRIC ELECTRICAL CONTRACTORS

1 9 5 5

## DEDICATION CEREMONIES

- Master of Ceremonies . . . . . (President, Manhattan Chamber of Commerce) . . . . . C. M. Skaggs
- Invocation . . . . . (President, Manhattan Ministerial Alliance) . . . . . Rev. Leslie L. Kingsbury
- Music . . . . . Matt Betton
- Honored Guests . . . . . City Commission Members, During Building Project
- |             |                |                   |
|-------------|----------------|-------------------|
| Z. R. Hook  | Ashley Monahan | Richard D. Rogers |
| Harold Howe |                | Lillian P. Bascom |
- Ribbon Cutting . . . . . Mayor, N. D. Harwood
- Address Topics:
- |                                 |                   |
|---------------------------------|-------------------|
| Planning for the Building       | Harold Howe       |
| Site Acquisition                | Richard D. Rogers |
| Early Planning for the Building | Sam Charlson      |

### OPEN HOUSE, CITY OFFICES AND PEACE MEMORIAL AUDITORIUM

#### CITY OFFICIALS



- City Commissioners:
- N. D. Harwood, Mayor
  - R. P. Martin
  - Ray H. Pollom
  - Charles Arthur
  - L. E. Conrad
- City Manager: W. Barton Avery  
Asst. Manager: D. C. Wesche

# DEDICATION

SEPTEMBER 26, 1955

PEACE MEMORIAL AUDITORIUM

## HISTORICAL SKETCH

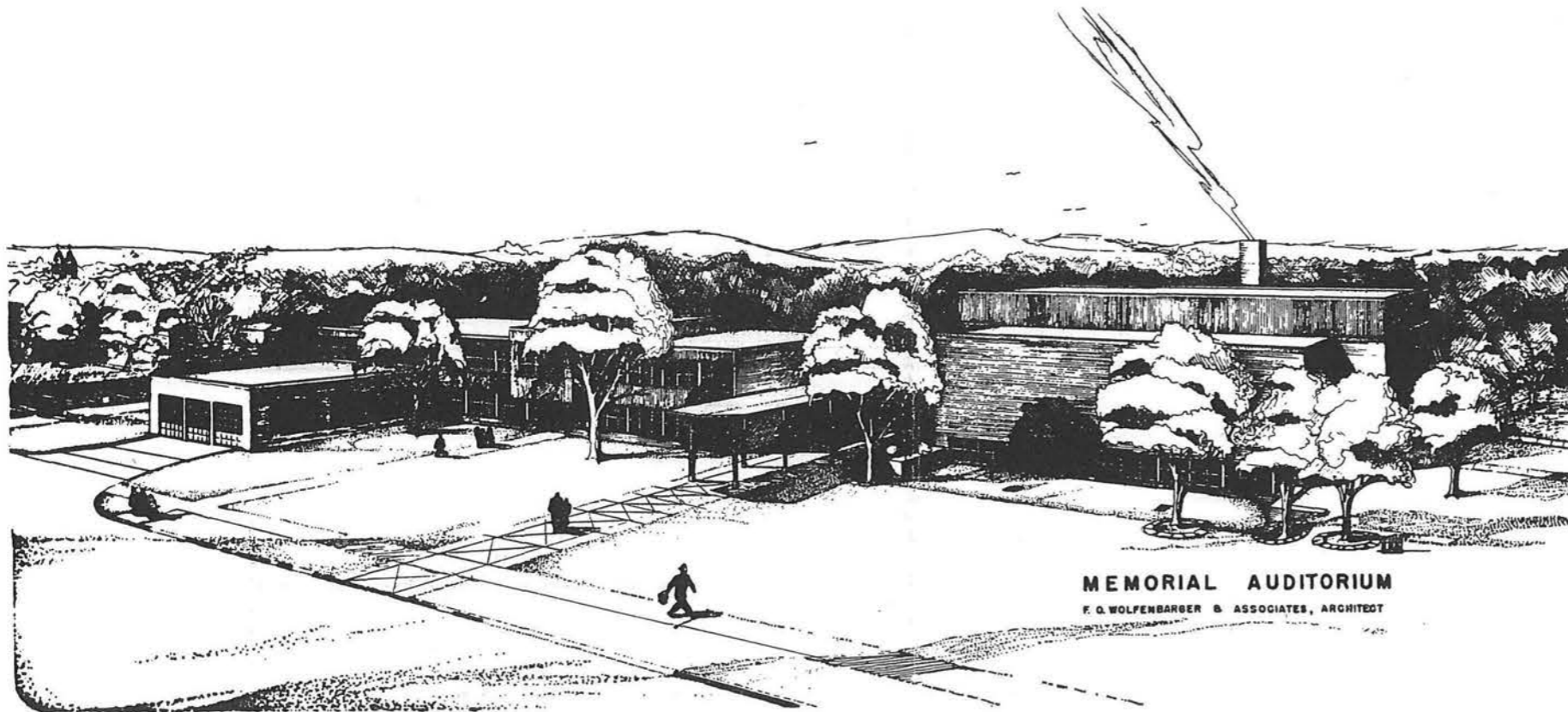
A structure presenting the awed, silent commemoration of pioneer ancestors, the hope that that courage and stamina which once built a nation will remain forever to strengthen its character; this is the design of Peace Memorial Auditorium.

Perceiving this wish of commemoration and hope on the part of Manhattan citizens, the idea of a functional memorial was conceived following World War II.

First concrete action toward the structure's realization began with a \$800,000 bond issue in March of 1946.

Lying fallow for the next five years to nourish itself on public enthusiasm; then catching the same spirit that gave Manhattan its new governmental form, its world renown rehabilitation after the 1951 Flood, the auditorium project began anew with the acquisition of the site at Eleventh and Poyntz.

Our building, under the architectural design of Floyd O. Wolfenbarger, incorporates ideal concepts of beauty and function. There are 33,872 square feet of floor area. Several elements of design are outstanding; the use of aluminum and brick exterior serve texture beauty, greatly reduce construction costs, and facilitate maintenance; the acoustical quality of the auditorium meets the highest requirements; and the "arena" design embodies all the uses to which a municipal auditorium can be put.



Photographs by Studio Royal,  
Manhattan, Kansas